



Arizona Association for Play Therapy

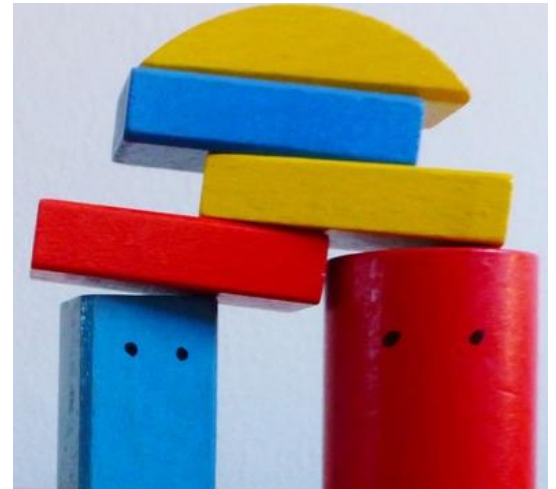
23rd Annual Conference

Baby Brains: Developmentally Sensitive Play Therapy with Infants & Young Children *and* Play Therapy – Fun for the Whole Family

featuring

**Brijin Gardner, MSW, LCSW,
LCSW, RPT-S**

Presentation Levels: Appropriate for all Levels



February 16-17, 2018

8:30 a.m. - 4:15 p.m.

www.azapt.org

VENUE INFORMATION

The Beatitudes Campus
1610 W. Glendale Avenue, Phoenix, AZ 85021



NEARBY ACCOMMODATIONS

Motel 6

8152 N. Black Canyon Highway
Phoenix, AZ 85051
602-995-7592
<http://bit.ly/2d0ZkdX>

Residence Inn Phoenix

8242 N. Black Canyon Highway
Phoenix, AZ 85051
602-864-1900
<http://bit.ly/2awceNI>

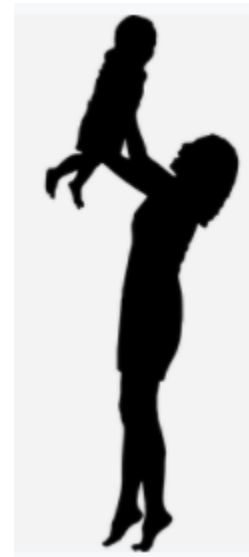
Sheraton Crescent Hotel

2620 W. Dunlap Avenue
Phoenix, AZ 85021
602-943-8200
<http://www.sheratoncrescent.com/>

Conference Description

Baby Brains: Developmentally Sensitive Play Therapy with Infants & Young Children

This training covers key neural developmental processes and sequences that contribute to critical concepts that are applicable to play therapy techniques with young children of varying ages, diagnoses, and relational trauma. Key principles of neurodevelopment and neurobiology will be reviewed in relationship to critical clinical treatment decisions. Early childhood relational trauma affects treatment decisions, we will look through the lens of attachment theory and at the therapist's role in creating safety throughout the play therapy process. Training will include attachment-based experiential, body-sensing play therapy techniques to implement with young populations.



After the workshop, participants will be able to:

1. Understand key principals of neurodevelopment and how social and emotional trauma affects brain development and function
2. Gain current research and resources that support the use of play therapy as an effective treatment with young traumatized children
3. Explain the developmental and functional disorganization resulting from trauma and toxic stress in early childhood
4. Integrate client and dyad behavioral information to respond appropriately and design helpful play therapy approaches for treatment
5. Practice and experience several attachment-based play therapy techniques to utilize with young children and caregivers.

Play Therapy – Fun for the Whole Family

This workshop is designed to refresh therapists and expand clinician's tool kits for working with families, parent-child dyads and various types of groups. Using an attachment framework, we will learn and practice play therapy interventions that can be used from the beginning to the end of treatment. Techniques and interventions will address common to complex issues that families bring to therapy. Come ready to play!



Following the workshop participants should be able to:

1. Explain the use of play therapy as a therapeutic tool for working with families, parent-child dyads and various groups to foster healing
2. Explain why a play therapy approach offers a viable intervention for families and parent-child dyads
3. State the role of attachment with children and parents and how this affects treatment planning
4. Identify strategies to partner and engage parents in the treatment process
5. Describe ten creative play therapy interventions to use with families throughout the treatment process
6. Apply information and hands-on skills acquired to play therapy clinical work with children and families

About the Speaker: Brijin Gardner, MSW, LCSW, LCSW, RPT-S



Brijin Gardner is currently the Director of Clinical and Social Services for Operation Breakthrough, an early childhood education center in the urban core of Kansas City serving families living in poverty. She is a frequent speaker at national and state conferences and is a published author. Brijin is passionate about all children and families receiving the best clinical interventions and services available to support healthy child development positive relationships and improved outcomes for families.

Continuing Education

Twelve (12) CE credits have been applied for from the **Arizona Psychological Association** and are available for Psychologists, Counselors, Marriage & Family Therapists, and Social Workers. The program must be attended in its entirety for the full 12 hours of CE credits from the AzPA. This program is co-sponsored by the Arizona Psychological Association (AzPA). AzPA is approved by the American Psychological Association to sponsor continuing education for psychologists. AzPA maintains responsibility for this program and its content. **Thirteen (13) CE credits** have been applied for from the **National Association of Social Workers, Arizona Chapter**. AZAPT (provider #97-035) is approved by the **Association for Play Therapy** (APT) to offer continuing education specific to Play Therapy.



Promote Your Practice

Sponsor & Advertising Opportunities are available. Visit www.azapt.org or contact Suzanne at 480-289-5761 or suzanne@azapt.org to learn more.



The Resolution Group, Inc.

Resolving Child, Adolescent and Adult Sexual Conflict
623 W. Southern Ave. Suite #7 Mesa, AZ 85210
Phone: 480-962-9288 Fax: 480-962-1293

SCHEDULE

Friday & Saturday
February 16-17, 2018

07:45-08:30am Registration/Coffee

08:30-10:15am Presentation

10:15-10:30am Break

10:30-11:45am Presentation

11:45-01:00pm Lunch

(Friday is the AZAPT Annual Meeting)

(Lunch provided on Friday; Saturday lunch on own - bistro and dining room options available onsite)

01:00-02:30pm Presentation

02:30-02:45pm Break

02:45-04:30pm Presentation

In an effort to be more conscious about our natural resources, the speaker handouts will be available for download prior to the conference. No paper handouts will be provided. Thank you for your understanding.

Registration Form

First Name: _____

Last Name: _____

Agency: _____

Address: _____

City/State/Zip: _____

Phone: _____ Fax: _____

Email: _____ Website: _____

Early Registration – by January 31, 2018

- \$195 Early Registration AZAPT/APT Member
- \$219 Early Registration Non-Member of AZAPT/APT
- \$150 Student (for both days)
- \$125 One Day Attendance __ Fri / __ Sat
- \$179 Group Rate (3 or more)* AZAPT/APT member
- \$205 Group Rate (3 or more)* Non-Member

Lunch will be provided on Friday as part of the Annual Membership Meeting

*Rate per person. To receive the group registration rate, all registrations must be submitted together with one method of payment. If you have any questions, please call Suzanne at AZAPT at 480-289-5761.



Become a member! Visit us online at www.azapt.org or email suzanne@azapt.org

Regular Registration – by February 10, 2018

- \$245 Regular Registration AZAPT/APT Member
- \$275 Regular Registration Non-Member of AZAPT/APT
- \$175 Student (for both days)
- \$150 One Day Attendance __ Fri / __ Sat
- \$225 Group Rate (3 or more)* AZAPT/APT member

Lunch will be provided on Friday as part of the Annual Membership Meeting

Late or Onsite Registration – after February 10, 2018

- \$265 Late Registration AZAPT/APT Member
- \$290 Late Registration Non-Member of AZAPT/APT
- \$200 Student (for both days)
- \$180 One Day Attendance __ Fri / __ Sat
- \$225 Group Rate (3 or more)* AZAPT/APT member

Lunch will be provided on Friday as part of the Annual Membership Meeting

Payment

- Check (made payable to AZAPT) \$ _____
- Credit Card: Visa MasterCard American Express \$ _____

Credit Card Number: _____

Expiration Date: _____ Security Code (3 digits Visa/MC; 4 digits AMEX): _____

Authorized Signature: _____

Registration and Cancellation Policy:

Mail the completed registration form to the indicated address. Special Accommodations will be made upon request for individuals with disabilities. Please contact Suzanne at 480-289-5761 or suzanne@azapt.org by January 31st. A map and parking instructions will be included with your confirmation. Early refunds must be requested in writing, and a \$35 administration fee will be assessed. **No refunds will be given after 01/04/18. Substitutions may be requested.** AZAPT's liability is limited to registration. Disclaimers: Registrants understand and agree that any photograph, video or audio recording of themselves may be used to further promote the Annual Conference or AZAPT.

Return completed registration with payment to:

Arizona Association for Play Therapy | 7949 E. Acoma Drive, Suite 207, Scottsdale, AZ 85260
Fax: 480.289.5765 | Email: suzanne@azapt.org | Online: www.azapt.org